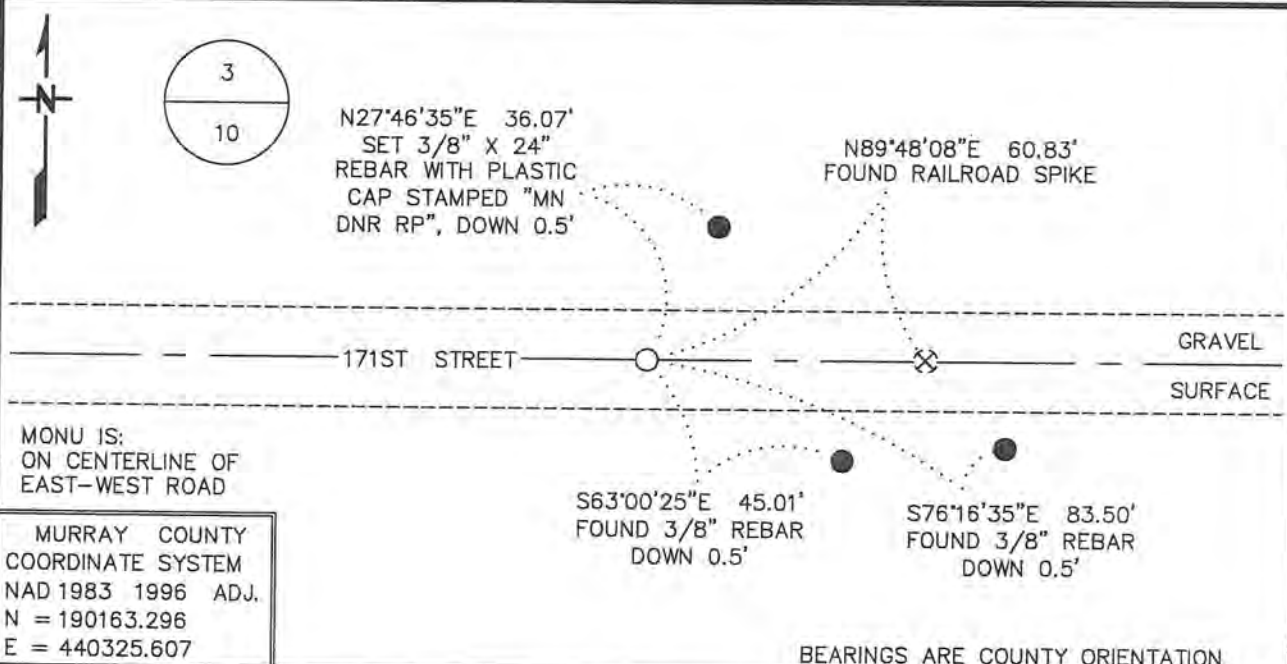


CERTIFICATE OF LOCATION OF GOVERNMENT CORNER

NORTH QUARTER Corner of Section 10, Township 107 N, Range 43 W
5TH Principal Meridian, State of Minnesota, County of MURRAY

At the corner location shown on the sketch:

- On _____ found a _____
- DATE
- left monument as found, lowered monument, removed monument (explain)
- On 1/30/17 Placed a 3/4" X 24" REBAR WITH PLASTIC CAP STAMPED
- DATE
- "MN DNR LS 17003", DOWN 0.5'



MONU IS:
ON CENTERLINE OF
EAST-WEST ROAD

MURRAY COUNTY
COORDINATE SYSTEM
NAD 1983 1996 ADJ.
N = 190163.296
E = 440325.607

BEARINGS ARE COUNTY ORIENTATION

Statement of evidence for this corner location is on back of this page.

FEBRUARY 2017
WMA00754

I hereby certify that this plan, specification, or report was prepared by me or under my direct supervision and that I am a duly Licensed Land Surveyor under the laws of the State of Minnesota.

SIGNATURE Bruce W. Shepperd DATE 10/9/17 License Number 17003
 BRUCE W. SHEPPERD

North Quarter Corner of Section 10, Township 107 North, Range 43 West
Page 1 of 3

The DNR Division of Lands and Minerals contacted the following for survey information:

Website - mngeo.state.mn.us for GLO plat and field notes

Website - murray-countymn.com for section and quarter section corner information

Murray County Recorder's Office

Bueltel-Moseng Land Surveying, Inc. of Marshall

Westwood Multi-Disciplined Surveying & Engineering of Eden Prairie

- 1866 U.S. General Land Office notes, obtained from mngeo.state.mn.us, show the corner marked with a post, in a mound.
- 1908 Plat Books for Cameron Township, obtained from the County Recorder's Office, show
1926 an east-west road and property division north in the area of the corner.
- 1968 March, the DNR conducted a survey in Section 3 and the field notes state the following about this corner:
Assumed at PI E-W road and fence north, dug down 2 feet with pick and found nothing, set railroad spike for the corner.
The following ties are shown to corner:
2580.72 feet from the northeast corner of Section 10
nail and bottle cap in corner fence post, north, 32.95 feet
nail and bottle cap in fence post, northeast, 41.40 feet
- 2006 March 3, A Certificate of Location of Government Corner, obtained from the County Recorder's Office, which is also on Website murray-countymn.com, signed by Daniel Bueltel, LS No 43844, shows that a 1 inch iron pipe with seal number 43844 was set for the corner. The following tie is shown to the corner:
on the center line of an east-west road

The following is from the statement of evidence:

In 1866, J.W. Bishop did the original subdivision of the township.

In April, 1968 the DNR assumed the fence to the north and the centerline of the road for the North Quarter corner of Section 10-107-43. This fence runs at an angle to the northwest. Midway is 60' +/- west of the fence to the north.

On March 3, 2006 Bueltel-Moseng Land Surveying shot the North Quarter corner of Section 3, then staked out the north-south quarter line using the calculated midway. We drove to the center of Section 3 and the north-south fence at the center of the section was +/- 2'. We set a 1" iron pipe with seal #43844 midway between the sections corners and in the center line of the road.

North Quarter Corner of Section 10, Township 107 North, Range 43 West
Page 2 of 3

- 2006 March 8, A Certificate of Survey in Section 10, by Daniel Bueltel, LS No 43844, obtained from Bueltel-Moseng Land Inc., shows that a 1 inch iron pipe with seal number 43844 was set for the corner. The corner is shown:
2643.04 feet from adjoining section corners
- 2007 June 6, A Certificate of Location of Government Corner, obtained from the County Recorder's Office, which is also on Website murray-countymn.com, signed by Christopher Moehrl, PE & LS No 40853, shows that a railroad spike was found down 0.2 of a foot at the corner. The following ties are shown to the corner:
on the center line of an east-west road
set 3/8 inch rerod, down 0.5 of a foot, north-northeast, 30.37 feet
set 3/8 inch rerod, down 0.5 of a foot, southeast, 28.46 feet
set 3/8 inch rerod, down 0.5 of a foot, southwest, 29.37 feet
- 2016 November 1, the DNR Division of Lands and Minerals located the following in the area of the corner:
- 1) the iron pipe set in 2006 by Daniel Bueltel, LS No 43844
 - 2) the railroad spike set by the DNR in 1968 and found in 2007 by Christopher Moehrl, PE & LS No 40853,

Being that the current location of the northwest corner of Section 10 is in a different location then what was used in 2006 by Daniel Bueltel, LS No 43844, a new position for the north quarter corner of Section 10 was computed as follows, which is the same method that Daniel Bueltel, LS No 43844, used in 2006:

equal distance from adjoining section corners – 2644.22 feet apart
on the center line of an east-west road

The computed position for the north quarter corner of Section 10 was found to be:

1.17 feet west of the found iron pipe with plastic cap stamped 43844
60.83 feet west of the found railroad spike

Then an 8 foot east-west by 8 foot north-south by 3 foot deep hole was dug with a backhoe, the center being the found iron pipe. No evidence of a monument was found in the excavation. Searched for and found two of the 2007 record ties. Did NOT excavate in the area of the found railroad spike.

Also, located the projected intersection of old down fences west and south in the area of the center of Section 3 and found it to be:

3.33 feet west of a straight line from the computed position for the north quarter corner of Section 10 to the north quarter corner of Section 3

North Quarter Corner of Section 10, Township 107 North, Range 43 West
Page 3 of 3

Analysis of the above information led the DNR Division of Lands and Minerals to conclude that the computed position for the corner, which is the same method that Daniel Bueltel, LS No 43844, used in 2006 is:

equal distance from adjoining section corners – 2644.22 feet apart
on the center line of an east-west road

A $\frac{3}{4}$ inch by 24 inch rebar with a plastic cap stamped "MN DNR LS 17003" was set at the computed position for corner as shown on the sketch of reference ties. The found capped iron pipe with plastic cap stamped 43844 was discarded.